

KEY  
VOCABULARY

Light

Speed of light

Mirror

Shade

Reflection

Prism

Light is a **source of illumination, it allows us to see**. There are natural and artificial sources of light on earth. The sun is a natural source of light that supports life on earth

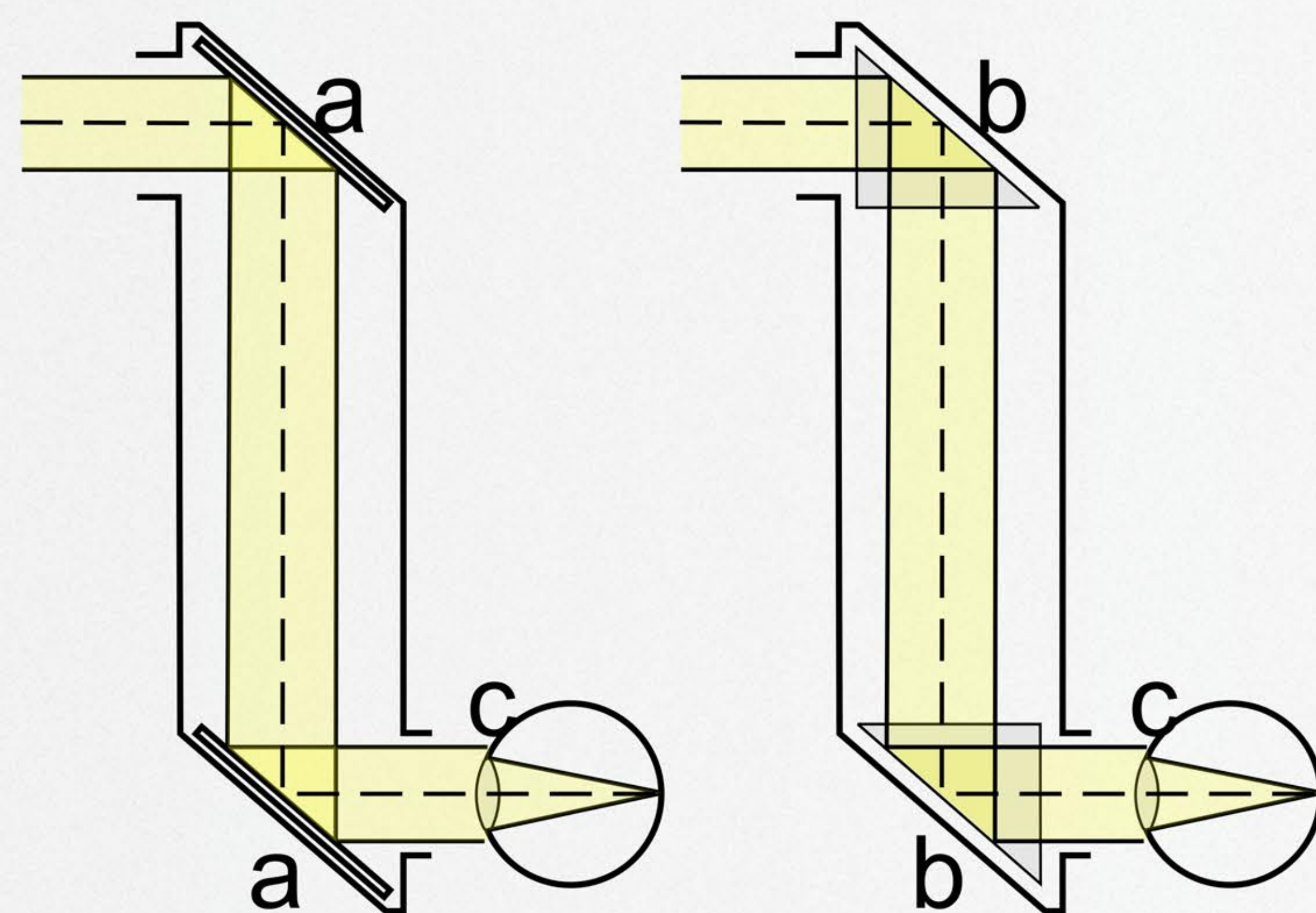
The speed of light is believed to be **the fastest speed at which anything in the universe can travel**, approximately 650 million miles per hour. Scientists use the speed of light when calculating vast distances in space

A **surface which reflects a clear image**. Archaeologists have found mirrors made from polished stone dating back over 6000 years. The Ancient Egyptians used polished copper to create mirrors

A **dark patch where light has been blocked**. Shade is darker and cooler than areas exposed to direct sunlight

The **return of light from a surface**. Some materials absorb light, but others reflect it

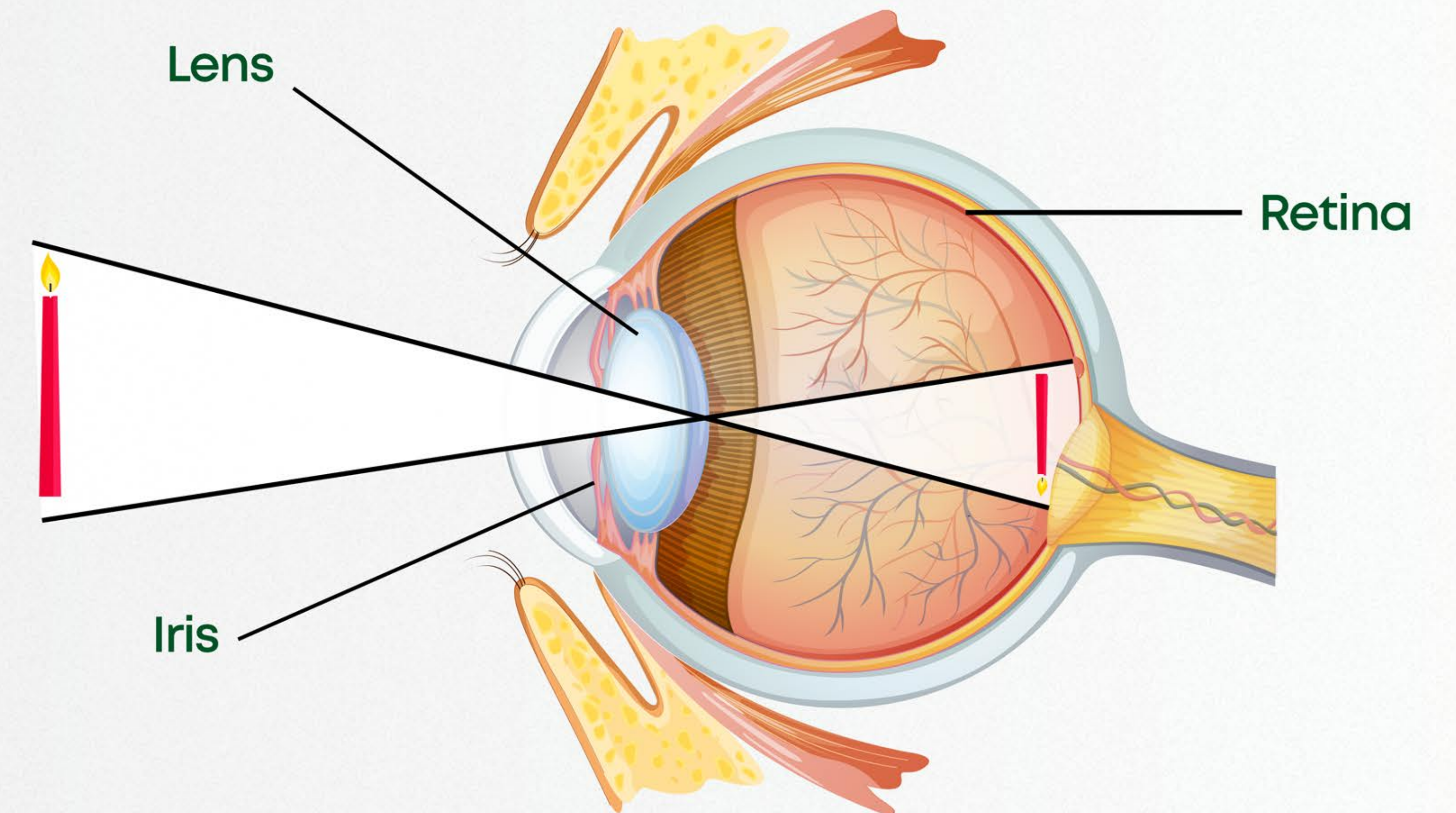
A wedge shaped object which **can split white light into a rainbow spectrum of colours**. Scientists call the splitting of light 'dispersion'



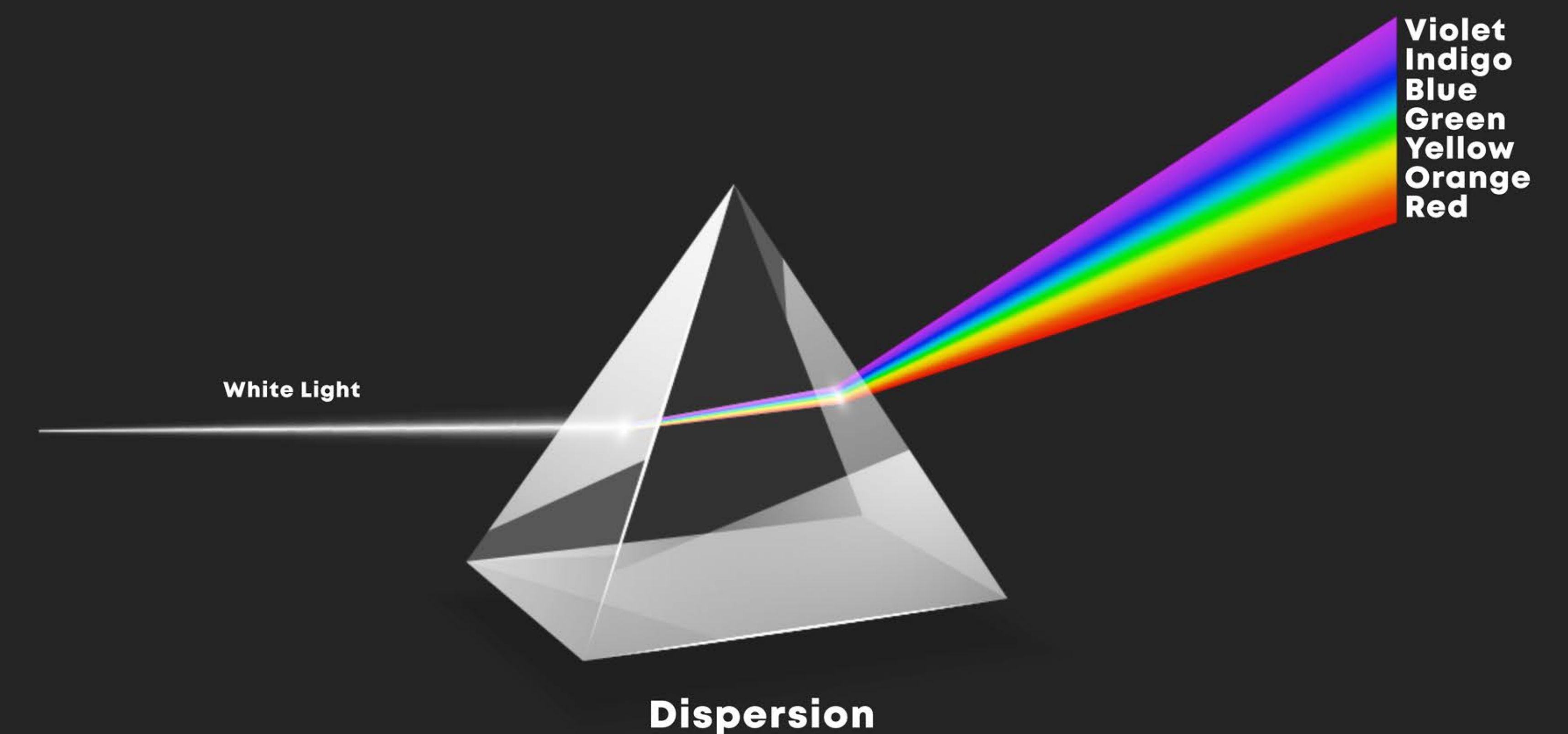
**A Periscope** – a device that uses reflection of light to allow the user to see something that is out of their line of sight.

**At A, the mirrors are tilted 45° and at B the light reflects from the mirrors travelling down the Periscope. At C, the image can be seen by the user**

### CROSS SECTION OF HUMAN EYE



**Light is essential for our eyes to see**



**Dispersion**

**A prism can split white light into rainbow colours**